

Evaluating Complex Community and Systems Initiatives

Canadian Evaluation Society – Ontario Chapter Working Lunch Series

A. Sidiq (Sid) Ali, PhD
Principal
Research and Evaluation Consulting
info@rae-consult.com



Experiences with Program Evaluation in High Immigration Settings





Overview

- Context for Peel
- Experiences from 3 Projects
- Final Thoughts
- Q & A



Total Immigrants as a Percentage of the Population

Region of Peel

48.63%

Toronto

52.40%

Los Angeles

31.90%

New York

27.50%

London

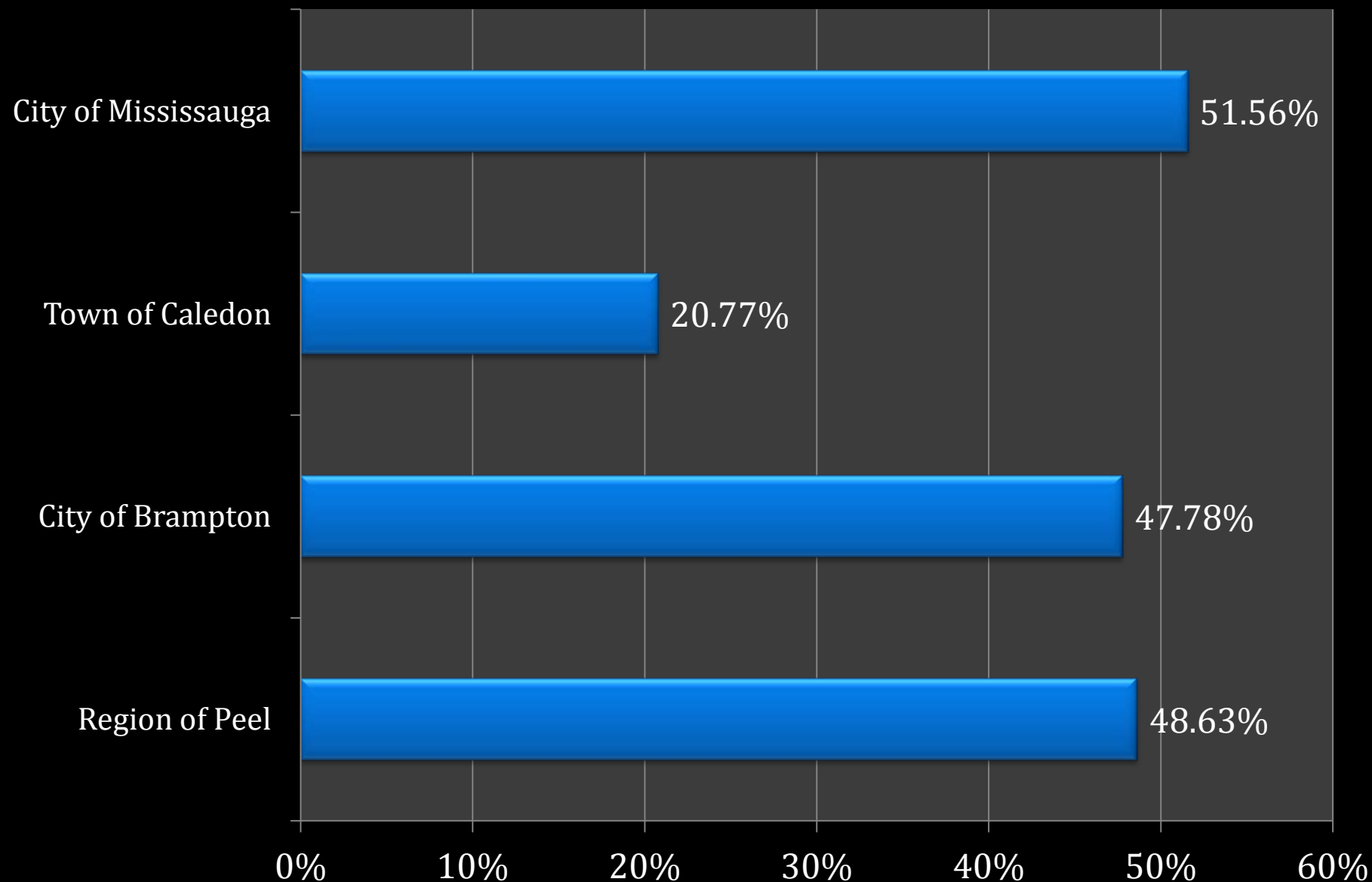
19.50%

Paris

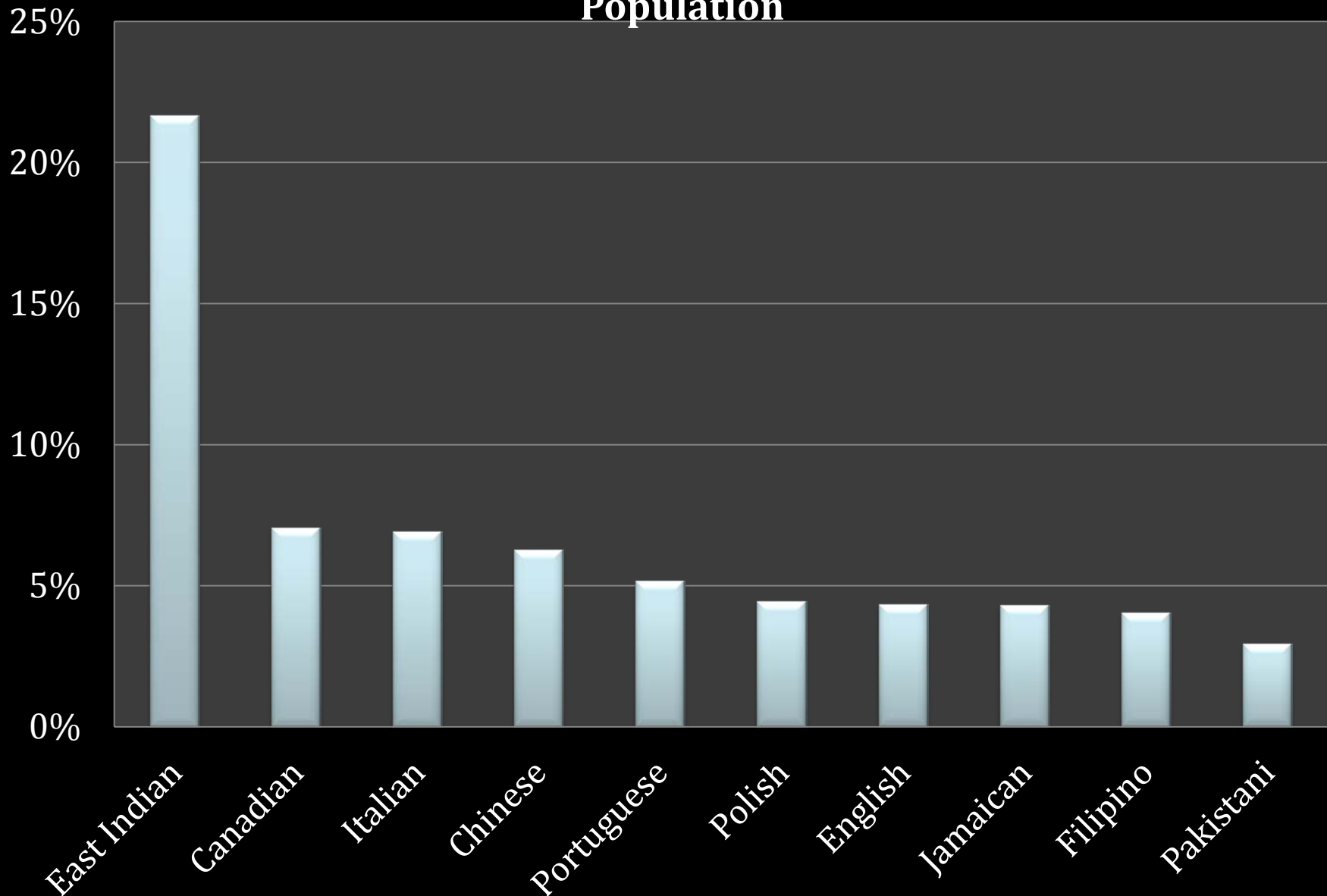
19.40%

0.0% 10.0% 20.0% 30.0% 40.0% 50.0% 60.0%

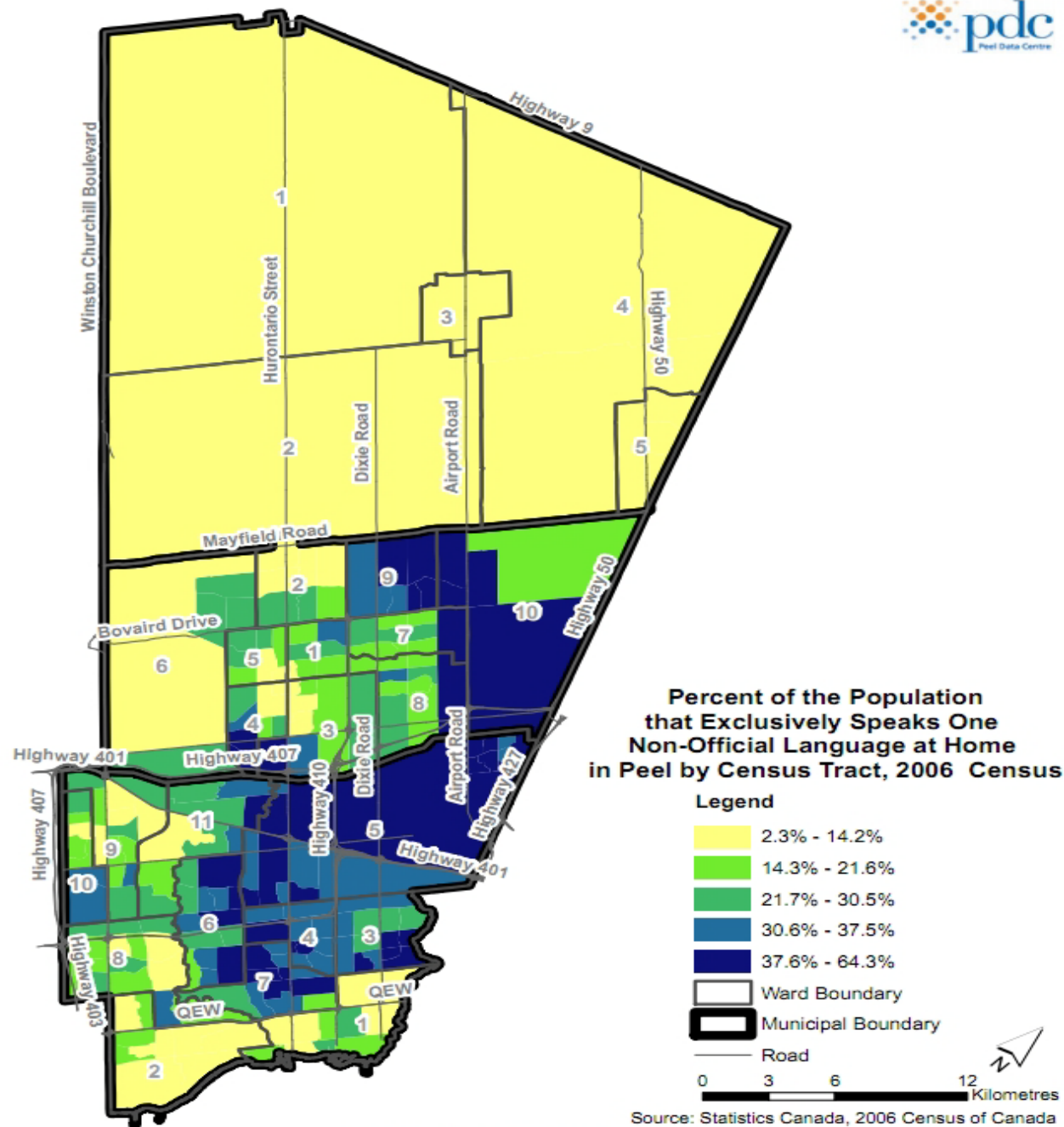
Total Immigrants as a Percentage of Population



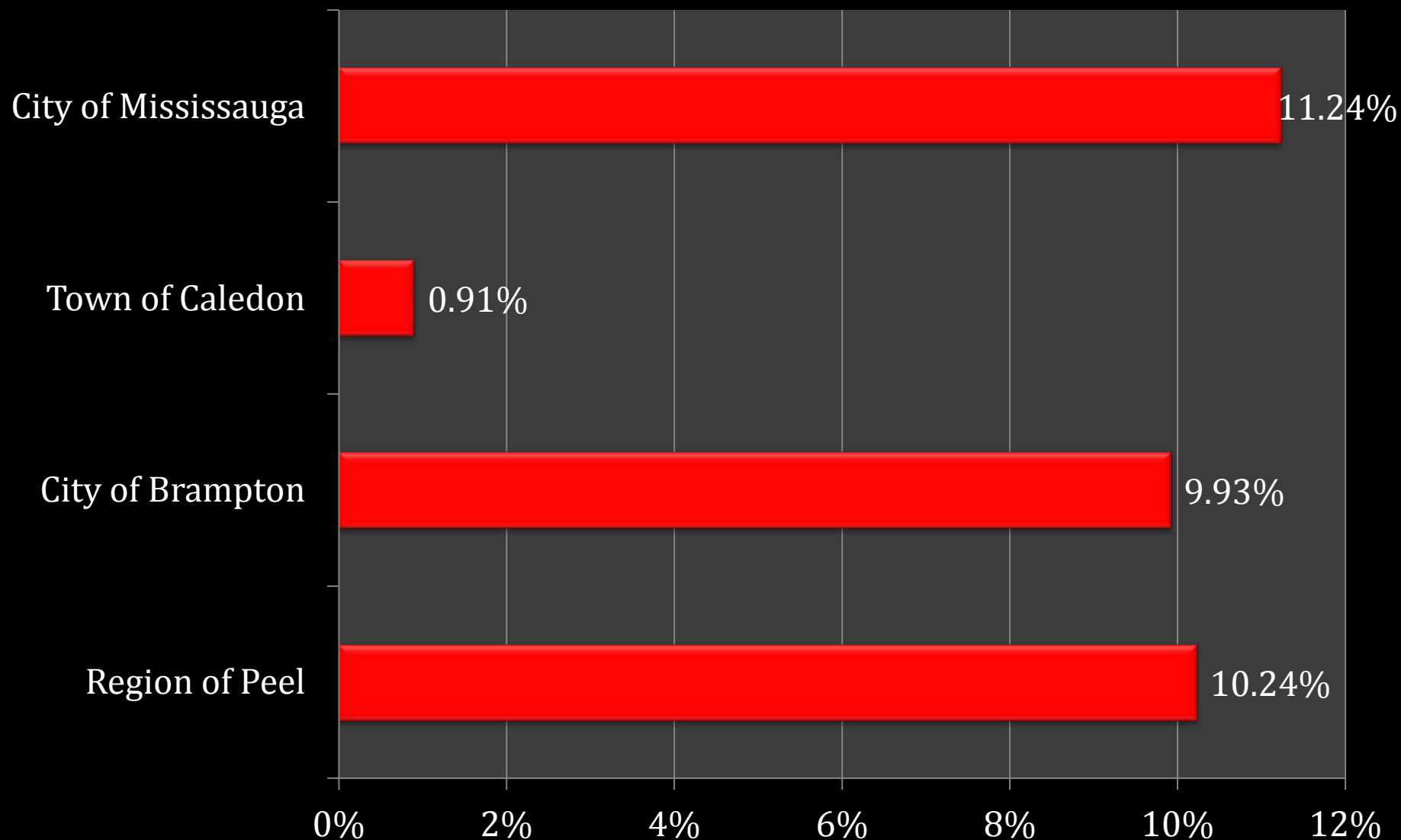
Top Ten Ethnic Origins in Peel as a Percentage of the Population



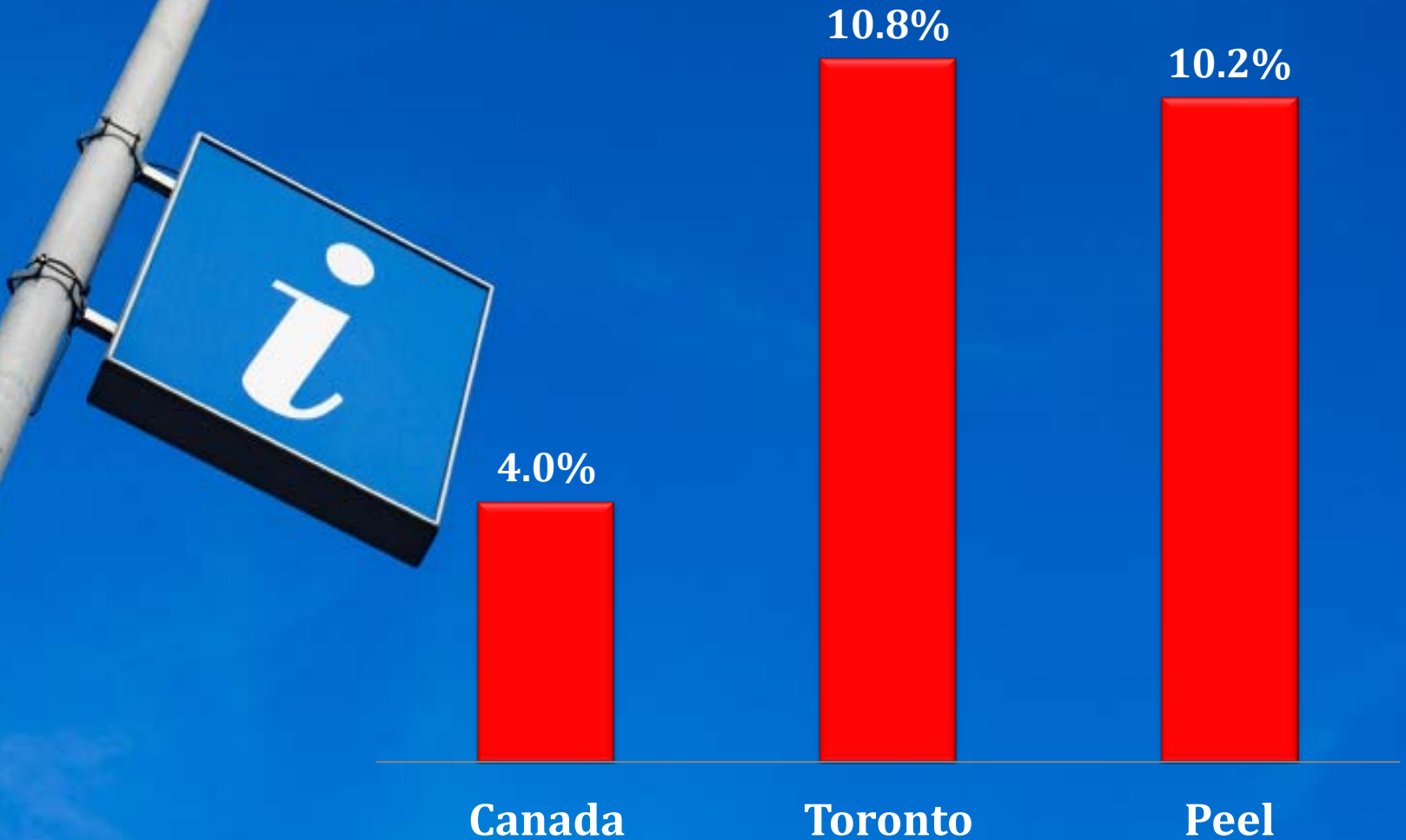
% of Peel Population that Exclusively Speaks 1 non-Official Language at Home by Census Tract, 2006




Recent (2001-2006) Immigrants as a Percentage of Population



Comparison of Recent Immigration (2001-2006) as a % of Population





Peel is a unique
landscape for
program operation
and evaluation



Increasing Small and Medium Enterprises' Ability to Hire and Retain Internationally Trained Immigrants



Funded	Workshops (Program) Developed	Program Coordination	Workshops (Program) Delivered
 Ontario Ministry of Citizenship & Immigration	 TRIIEC Toronto Region Immigrant Employment Council	 CONNECT Strategic Alliances	Ontario Colleges



The ICHR Project



Targets

Marketing

Competition

Content

Delivery





Teamwork ...



The Challenges Program



Funded

**Program Developed and
Delivered**

**Program Evaluation
Developed**



**Ministry of Children & Youth
Services**



**Center of Excellence for Children
and Youth Mental Health**

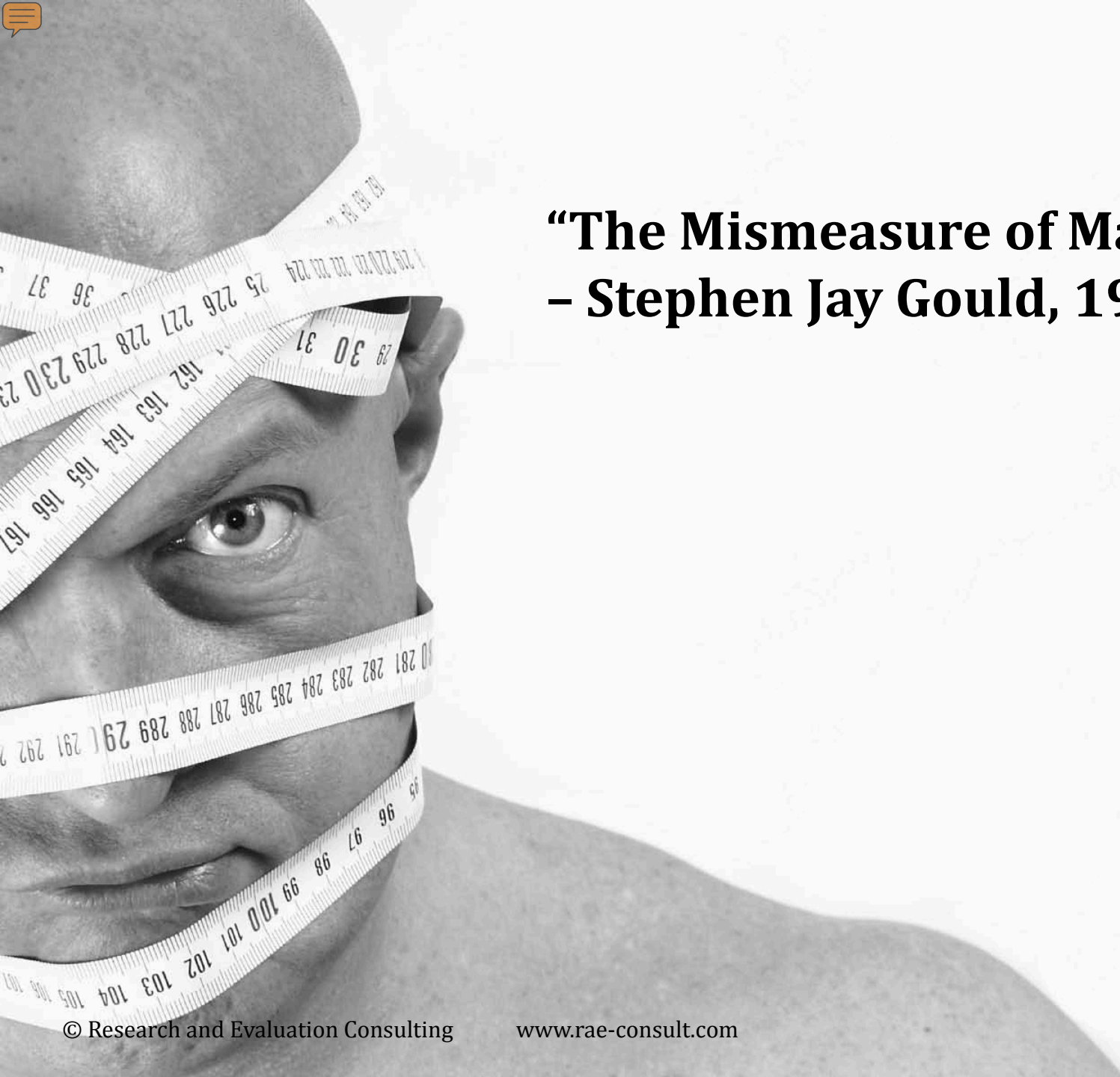


Cultural sensitivities

Language barriers

Practical program
evaluation





“The Mismeasure of Man” – Stephen Jay Gould, 1981



Programs for Internationally Educated Nurses



Funded



Ministry of Citizenship & Immigration

Programs Developed and Delivered



School of Nursing



Work-life balance

Practical
interventions

Flexibility



The background of the slide is a dense, close-up pattern of sharpened pencils. The pencils are arranged in a way that their hexagonal cross-sections are visible, creating a repeating geometric pattern. Each pencil has a different colored eraser, with colors including red, blue, green, yellow, purple, pink, and brown. The wood of the pencils is a light, natural color.

Same... Yet Different





Honour Diversity

Be Practical

Adaptation



Connect

A. Sidiq Ali, PhD

Principal, Research and Evaluation Consulting

Telephone: 905-916-0743

Email: info@rae-consult.com

Web: www.rae-consult.com

LinkedIn: <http://ca.linkedin.com/pub/a-sidiq-sid-ali/18/244/557>

